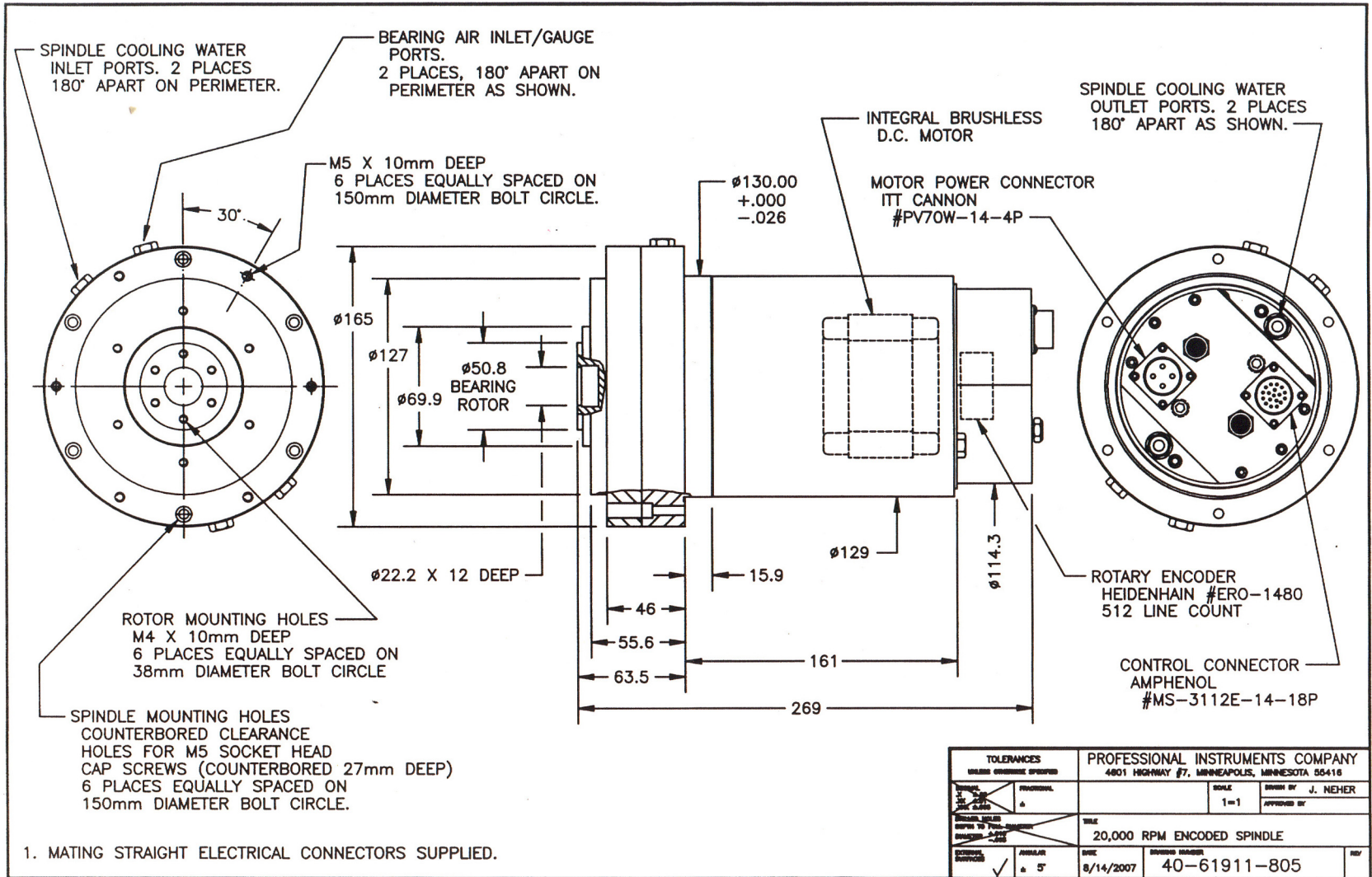


“ISO” 3. 375 B型 ブラシレスDCモーター組込式エア・ベアリング・スピンドル主要寸法図：

(モーター出力：500watts連続、最高回転数：20,000rpm)



1. MATING STRAIGHT ELECTRICAL CONNECTORS SUPPLIED.

TOLERANCES UNLESS OTHERWISE SPECIFIED		PROFESSIONAL INSTRUMENTS COMPANY 4801 HIGHWAY #7, MINNEAPOLIS, MINNESOTA 55418	
FINISH	PROF.	SCALE	DRAWN BY J. NEHER
APPROVED BY		1=1	APPROVED BY
TITLE		20,000 RPM ENCODED SPINDLE	
DATE	8/14/2007	REV	40-61911-805